

The following — “Smith-Appleby House Building Sequence” — is an excerpt from:

HISTORIC STRUCTURE REPORT

THE SMITH-APPLEBY HOUSE
Stillwater Road
Smithfield, Rhode Island

Prepared for:

Lombard J. Pozzi
Architect

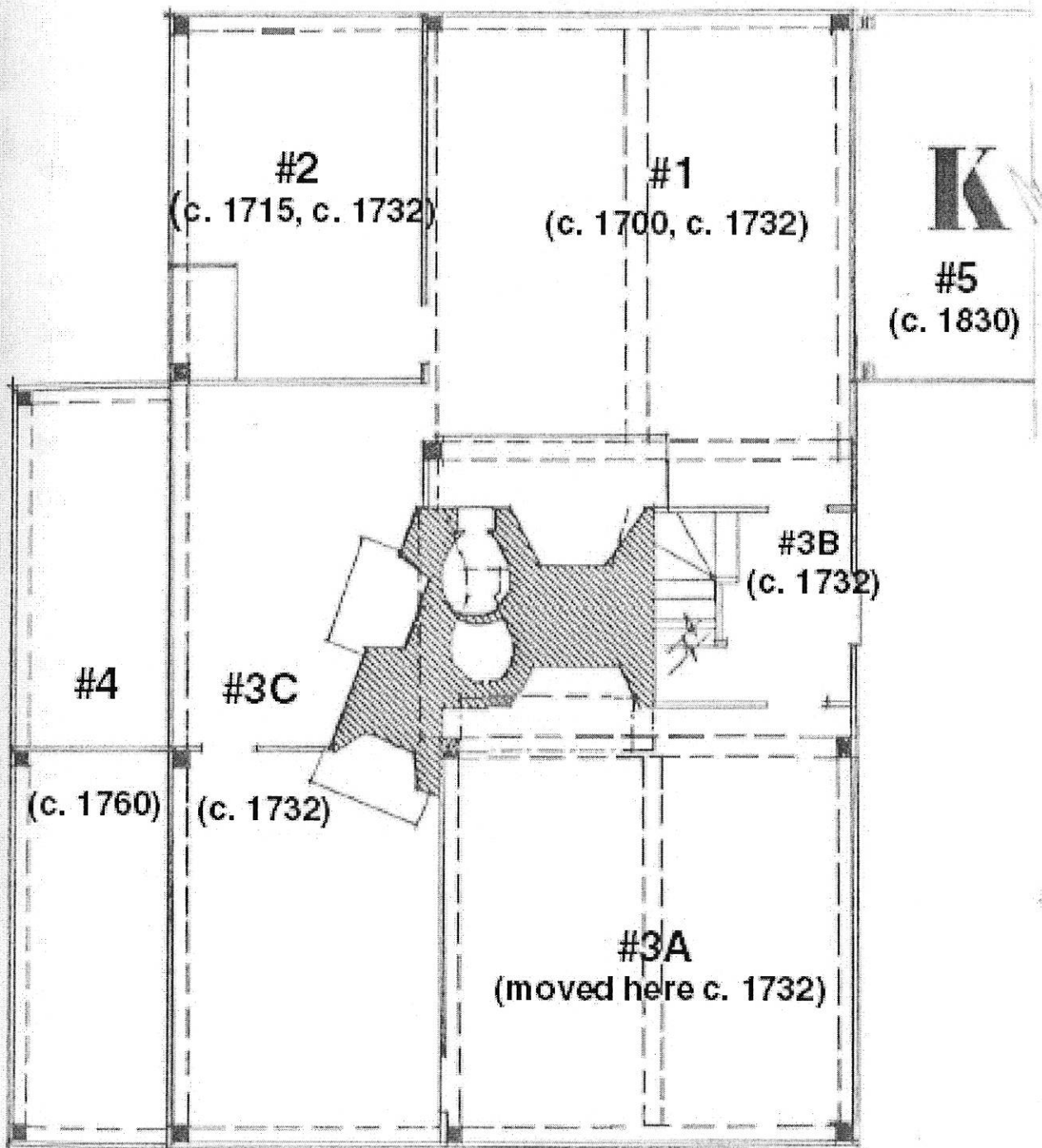
and the

Historical Society of Smithfield
Rhode Island

by

Russell Wright, AIA
Consultant in Historic Preservation
Warren, Rhode Island

June, 1982



Smith Appleby House Building Sequence
as determined by Russell Wright

